

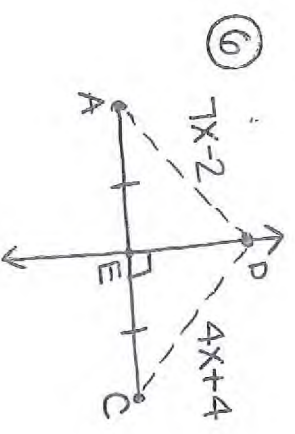
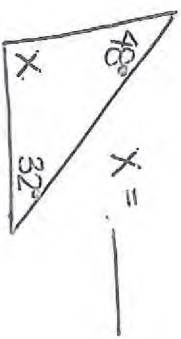
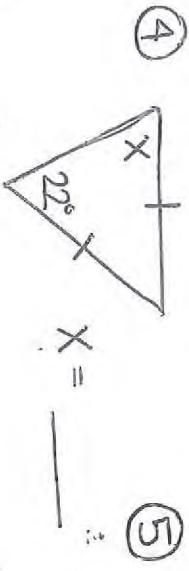
Name: _____

CFU: Triangle + Perpendicular Bisector Theorems

Fill in the blank.

- ① The sum of the interior angles of a triangle is _____.
- ② The base angles of an isosceles triangle are _____.
- ③ A point on the perpendicular bisector of a segment is _____ from the endpoints of the segment.

Find the value of x . Show your work.



\overline{DE} is the perpendicular bisector of \overline{AC} .
 $x = \underline{\hspace{2cm}}$

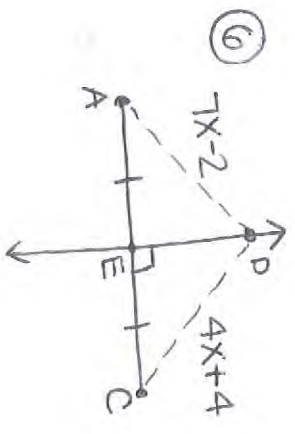
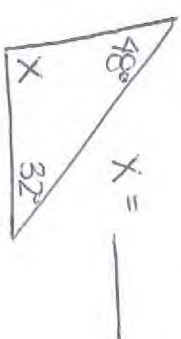
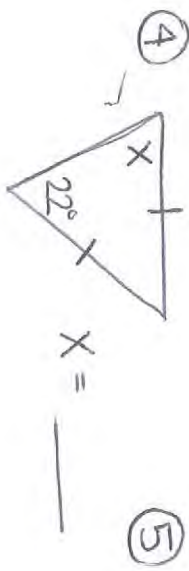
Name: _____

CFU: Triangle + Perpendicular Bisector Theorems

Fill in the blank.

- ① The sum of the interior angles of a triangle is _____.
- ② The base angles of an isosceles triangle are _____.
- ③ A point on the perpendicular bisector of a segment is _____ from the endpoints of the segment.

Find the value of x . Show your work.



\overline{DE} is the perpendicular bisector of \overline{AC} .
 $x = \underline{\hspace{2cm}}$

Name: Key

#21

CFU: Triangle + Perpendicular Bisector Theorems

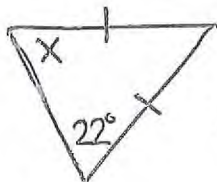
8 pts

Fill in the blank.

- 1 pt ① The sum of the interior angles of a triangle is 180° .
- 1 pt ② The base angles of an isosceles triangle are congruent.
- 1 pt ③ A point on the perpendicular bisector of a segment is equidistant from the endpoints of the segment.

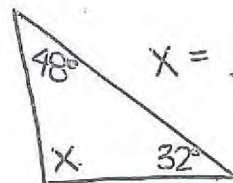
Find the value of x . Show your work.

1 pt ④



$x = \underline{22}$

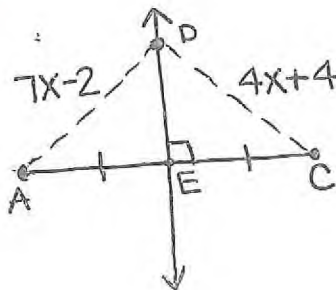
2 pt ⑤



$x = \underline{100}$

$x + 48 + 32 = 180$
 $x + 80 = 180$
 $x = 100$

2 pt ⑥



\overleftrightarrow{DE} is the perpendicular bisector of \overline{AC} .

$x = \underline{2}$

$7x - 2 = 4x + 4$
 $3x - 2 = 4$
 $3x = 6$
 $x = 2$