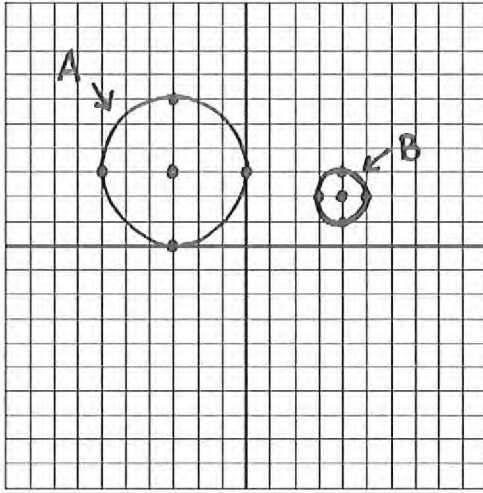


Name: _____

CFU: Similarity of Circles

1. Is Circle A similar to Circle B? Explain.

2. Are all circles similar? Explain why or why not.



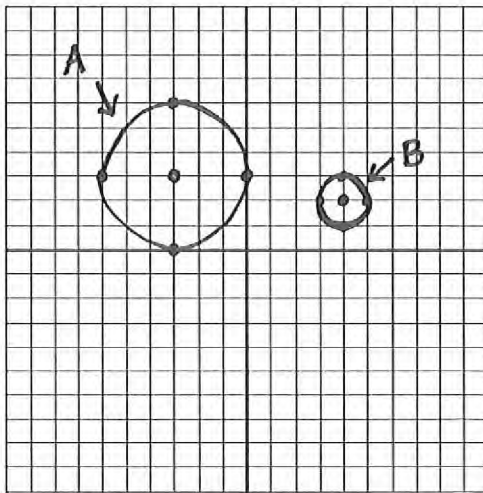
EmbeddedMath.com

Name: _____

CFU: Similarity of Circles

1. Is Circle A similar to Circle B? Explain.

2. Are all circles similar? Explain why or why not.



EmbeddedMath.com

Worth 6 pts

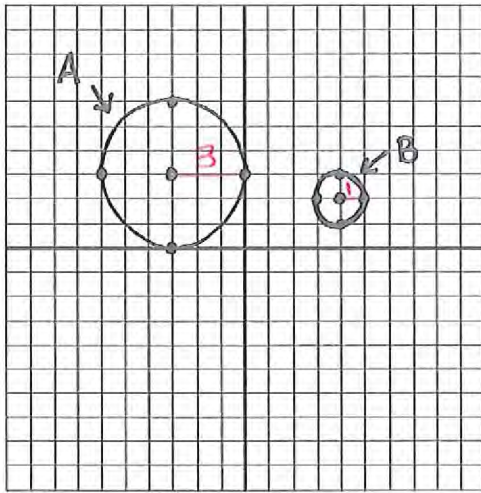
#5

Name: Key

CFU: Similarity of Circles

1. Is Circle A similar to Circle B? Explain.

4 pts



EmbeddedMath.com

Yes, b/c $\odot A$ was dilated by a factor of $\frac{1}{3}$, translated right 7 units + down 1 unit to create $\odot B$.

2. Are all circles similar? Explain why or why not.

2 pts

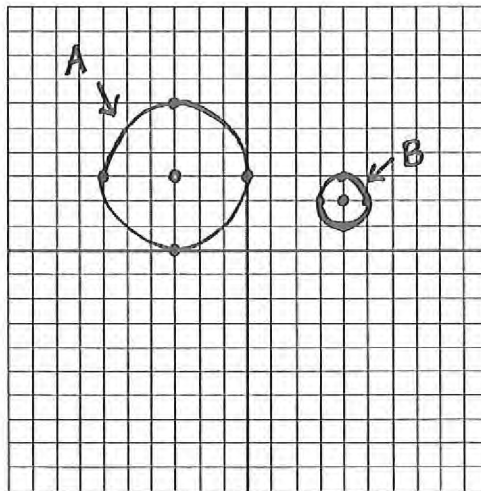
Yes, all circles are similar b/c they have the same shape.

Name: _____

#5

CFU: Similarity of Circles

1. Is Circle A similar to Circle B? Explain.



EmbeddedMath.com

2. Are all circles similar? Explain why or why not.